

Dame Hannahs Summer News 2025



Welcome

Welcome to the latest edition of Dame Hannahs News. We are delighted to be able to share our news and developments with you. Over the last few months our adults have continued to live life to the full. They are busier than ever with a variety of new activities and their old favourites, and we are also lucky to have some excellent activities run by external organisations. Our staff continue to make such a difference to our residents' lives with their dedication and enthusiasm.

Our refurbishment programme has been progressing really well and there have been noticeable changes in the main building. We now have a variety of spacious and welcoming rooms for our residents to use, and the main corridor is now looking much fresher and brighter. With our bungalow refurbishment programme, we have seen the re-opening of Newberry and welcomed new residents who have all settled in well. We have also received some generous grants which have enabled us to buy some important equipment such as a Communication Aid with Eyegaze package.

Our Fundraising team has vastly increased the programme of events onsite at Dame Hannahs. There is now a full schedule of regular events throughout the year in addition to the popular annual events such as the Cream Tea, Autumn Lunch and Christmas Fayre to which we would love to welcome you. Our Community Engagement Lead, Debbie, has been busier than ever giving talks to groups all over South Devon and we have been lucky to have a number of supporters taking on new challenges to raise funds for Dame Hannahs, including four of our managers who bravely jumped out of a plane!

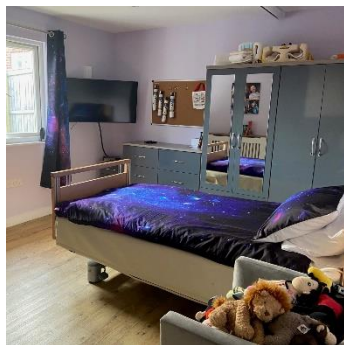
We are immensely grateful to you for all your ongoing support which is greatly appreciated by everyone throughout the Trust.

Professor David Coslett, Chair of Trustees

Refurbishment

Over the last few months there has been extensive refurbishment in the main building. We now have a light and spacious Family Room where our residents can spend time with their families when they come to visit in a relaxed and welcoming environment. There is also a new Day Lounge which is used by the adults who access our Day Services.

Our bungalow refurbishment programme has been progressing well and the latest one to be completed is Newberry. Hannah and Leo have both recently moved into this newly refurbished bungalow. They have settled in well and are enjoying life with their new housemates.



New Residents



Hannah started at Dame Hannahs in December 2024 aged 27 and lives in Newberry bungalow. She has a microdeletion on the long arm of chromosome 6 which causes global delay and short stature along with some physical disabilities.

Dad Chris said “Hannah is fun loving, cuddly, cheeky and stubborn and she knows a lot more than she lets on. Her favourite activities are swimming, going out anywhere where she can people watch, having stories read to her, colouring and sorting. She loves any sort of outdoor activity such as sailing and horse riding and, as a general rule, the

faster the better for Hannah!

Hannah seems to have settled in really well. She has formed an attachment to most of the staff in Newberry bungalow and has already made an impression! She knew Millie before she arrived as they were at Hollacombe together, so it was lovely for her to see a familiar face when she started.

Hannah being at Dame Hannahs has already changed our lives. We have been full time carers for 27 years but had reached the stage where we just could not continue to provide the level of care and stimulation Hannah needs. Knowing that she is safe and happy has made an incredible difference. It means that the time we do spend with Hannah now is quality time allowing us all to enjoy family time and fun again.”

Leo joined Dame Hannahs in September 2024 and lives in Newberry bungalow. He is 20 years old and has a complex medical condition resulting from Pneumococcal meningitis when he was six months old.

Dad Ashley said “Leo has settled in really well at Dame Hannahs. It has made a huge difference to our lives. For 20 years our whole life was centred around Leo and his needs, so we are now trying to get the right balance again. I stepped back from my career but am now able to do more work which is local to Ivybridge, so that I can still be involved in Leo’s life. My wife was his main carer for years and is now looking to go back to work.



He comes home every weekend and we visit him a lot. Leo has five younger sisters and whenever he is home there is always at least one sister there to help out and entertain him. He is a gentle giant with a cheeky sense of humour, and he loves music as well as getting out and about. He has made good friends in his bungalow and is happy which is the important thing for us.”

Your support makes a difference to all of those we care for!

Eyegaze

We are very lucky and grateful to the Hobson Charity for their very generous grant which enabled us to purchase a Communication Aid with Eyegaze, package. The communication aid can be accessed by touch, switches and also Eyegaze, which uses a specialist camera to enable people to control the computer using eye movements. This can be particularly beneficial to those with physical disabilities.

Because of this generous purchase, a lot of our young adults are working with the Speech and Language Therapy Team on opportunities to develop different communication skills. These include learning cause and effect skills, learning to make choices and how to put phrases together. These skills can be targeted using different specialist software, from games to vocabulary pages. Many of our adults are already benefitting from this amazing technology.

Several of our adults have made particularly good progress over the last few months. Dan composed a note using Eyegaze to invite our Activities Coordinator Louisa to the cinema. This is one example of how they can use it in everyday life.



Support Worker Champions



At Dame Hannahs we are committed to continually improving our services and striving for a gold standard in the care we deliver. As part of this commitment, we have recently appointed a number of Support Worker Champions. These new champions will play a vital role in our desire to consistently improve the quality of care for our adults and the working environment for our staff teams. The champions are primarily in place to:

- Promote and demonstrate best practice
- Mentor new and existing staff
- Shift lead and encourage team work
- Share knowledge and experience
- Become an expert in one key area

Dolapo, pictured, is the Record Keeping Champion and the other champions are responsible for Communication & Engagement, Dignity & Respect, Person Centred Care and Health & Safety

Dame Hannahs Fundraisers

Manager Skydivers

Four brave ladies jumped out of a plane recently and raised a wonderful £2,200 for Dame Hannahs. All four skydivers are present and past managers. They decided to take part in the skydive to raise money for the young people at Dame Hannahs with whom they have worked closely and got to know so well over the years. They were also keen to take on a new challenge and none of them had jumped out of a plane before.



Tugboats and Dolphins

This group of fundraisers took on a huge challenge in aid of Dame Hannahs. They cycled 1,000 miles over 10 days from Plymouth to Santander.

In the lead up to the event they organised other fundraising events including the Yorkshire Three Peaks Challenge and a Clip and Dip Fundraiser at Endsleigh Garden Centre. To date they have raised over

£5,000 and are planning to continue with their fundraising efforts over the coming months to reach their overall target of £10,000 to modernise and refurbish our Sensory Room which will be hugely beneficial to all of our residents.

Alex Harris

Alex decided to run the London Marathon in memory of her lovely nephew Zach who lived at Dame Hannahs for many years. In addition Alex also ran the Plymouth Half Marathon raising over £1,000 in total.



Skylark Pub

Supporter Julie very kindly decided to organise a Bingo Night at her local pub The Skylark in Clearbrook because she had heard so much about the work of Dame Hannahs from a close friend. The evening raised £419 and further dates have been planned to replicate such a fun evening.

Saltram Rotary

Saltram Rotary Club made a very generous donation of £1,029. The money was collected on their annual Christmas Sleigh Run. Past President Chris presented a cheque to Debbie from our Fundraising team.



If you would like to fundraise for Dame Hannahs please contact our fundraising team on 01752 898135

Reaching Communities



Our Community Engagement Lead Debbie is busier than ever with her talks in the community. Through networking and word of mouth about Debbie's very inspirational talks she has greatly increased the number of groups booking her, ranging from Rotary clubs, WI and U3A. The groups always give a donation and more often than not they will then go on to organise an event to raise further funds for Dame Hannahs.



Our regular bucket collections at local supermarkets have also helped us to reach local communities throughout the South Hams and to raise awareness as well as raising funds.

We are delighted to see an increasing number of visitors from the Ivybridge and wider South Hams communities at our events at Dame Hannahs. We now have a full and busy programme of events onsite throughout the year. These range from monthly Bingo Nights and regular Quiz Nights to our annual Cream Tea and Christmas Fayre.



We were delighted with the success of our most recent fundraising events. At both the Cream Tea Event and latest Bingo Night, our activity hall was packed with both regular supporters and new guests. The Cream Tea Event, which featured a fascinating talk by local author Stephanie Austin, raised a wonderful £1500 and the Bingo Night raised over £800.



Please turn to the back page or visit our website for all upcoming events or to book your tickets.

discoverhannahs.org/support-us/events

Our eight charity shops are thriving in Plymouth, Ivybridge, Saltash, South Brent and Newton Abbot. We have several other retail outlets in the pipeline and are excited to be reaching new communities. We also offer a regular collection service. For more information visit our website:

discoverhannahs.org/charity-shops

VE Day 80th Anniversary

Throughout the year we make sure that we mark important dates in the calendar. As well as celebrating religious festivals and national awareness days we recently celebrated the 80th anniversary of VE Day with a garden party. Everyone got into the spirit of VE Day with some wonderful 1940s costumes. Staff and residents joined in with singing and signing to favourite wartime songs and there was also a delicious selection of patriotic cakes! It was a very happy occasion in glorious sunshine.



Families

The families of our residents play a very important part in their lives at Dame Hannahs. We are delighted that the families are increasingly coming to visit. Over the last few months we have seen them come to the Mother's Day Cream Tea as well as our Christmas Fayre, Bingo Nights and other fundraising events. A lot of the parents have got to know each other over the years and it is good to see them catching up when they come to Dame Hannahs. We have also recognised the importance of a private space for their visits so it is lovely to see them enjoying the new Family Room. During the sunny weather they are also able to make the most of our extensive grounds.



Come Help Us Fundraise at our Events

Bingo Night Friday 4 July – Doors open 7pm and Eyes Down 7:30 Sharp

Come and enjoy an evening of fun with your family, children and friends all while helping us to raise vital funds to support Dame Hannahs ongoing work. Refreshments and treats available along with a raffle.



Yealmpton Agricultural Show Wednesday 30 July, Kitley Lawns, PL8 2NN

Come and support Dame Hannahs at our Cake Stall supplying a wide range of home baked goods while enjoying an excellent local agricultural show which is a fun day for all ages.

Bingo Night Friday 1 August - Doors open 7pm and Eyes Down 7:30 Sharp



Quiz Night Thursday 7 August

Enjoy a fun night full of challenges at our Quiz Night. Teams of up to 6 people so either create your own team or join others on the night. Tickets are £10 each and include a light dinner of quiche, salad and new potatoes. Register your team today!

Kingsbridge Agricultural Show Saturday 6 September, Borough Farm, TQ9 7QP

We will be serving a selection of drinks and home made sweet and savoury treats in our Refreshment Marquee. Come and visit us for your lunch or to relax between exhibits.

Bingo Night Friday 12 September – Doors open 7pm and Eyes Down 7:30 Sharp

Autumn Lunch Tuesday 30 September, Boringdon Park Golf Club, Plymouth, PL7 4QG

Annual charity luncheon with a fascinating talk by author Pam Vass - Reason or Rebellion? The Suffragette Story in the South West.

On August 4th 1913 a car was spotted speeding away from a Devon mansion late at night. Moments later the alarm was raised as flames lit up the sky. The papers were filled with speculation that suffragettes were to blame. Truth or fiction?

Ticket £27 which includes a two course lunch – Advance booking only

Bingo Night Friday 3 October – Doors open 7pm and Eyes Down 7:30 Sharp

Quiz Night Wednesday 22 October

Come and enjoy a fun night full of challenges at our Quiz Night. Teams of up to 6 people so either create your own team or join others on the night. Tickets are £10 each and include a cottage pie supper. Register your team today!

Bingo Night Friday 7 November – Doors open 7pm and Eyes Down 7:30 Sharp

Christmas Fayre Saturday 15 November 10am – 4pm

Come and join us at our Christmas Fayre where there will be a wide variety of stalls selling wonderful gifts and treats. Delicious food and refreshments will be available all day. It will be a great way to start the festive season!

Bingo Night Friday 5 December – Doors open 7pm and Eyes Down 7:30 Sharp



Dame Hannah Rogers Trust, Woodland Road, Ivybridge, PL21 9HQ

www.discoverhannahs.org

Registered Charity No: 1194836